

USB Driver Installation

Ultra, NSPI managed switches are equipped with both a USB port and an RS232 port for terminal access. In order to take advantage of the USB port, please visit [HYPERLINK "http://www.ultra-nspi.com"](http://www.ultra-nspi.com) www.ultra-nspi.com to install the USB driver.

After completing the installation, you may then connect the switch via USB. The New Hardware Wizard will appear:



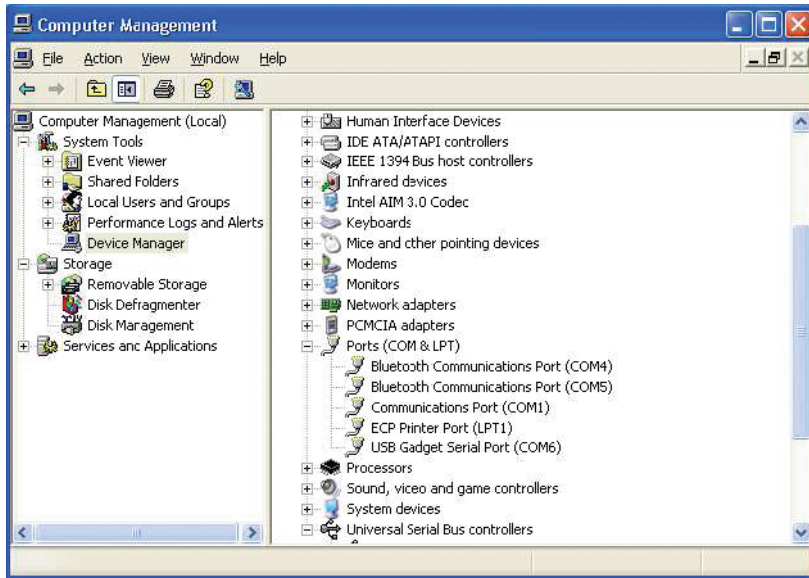
- * Select "No, not this time" and click Next.
- On the next screen, select "Install the software automatically," and click Next.
- The computer will locate the driver and confirm that you would like to install the unverified driver. Select "Continue Anyway" and click finish to complete the installation.

Note: USB Driver installation is for Windows XP only. Please contact Ultra, NSPI for assistance with Windows Vista.



View the USB COM Port

To view the COM port the USB device has been assigned to, open the Windows Device Manager. Expand the section for Ports(COM & LPT) and locate the port labeled "USB Serial Device."



The COM number following the name can now be used to access the switch using the terminal interface.

NOTE: The USB and RS232 ports cannot be connected simultaneously. Please connect only the cable type you wish to use to communicate with the switch.